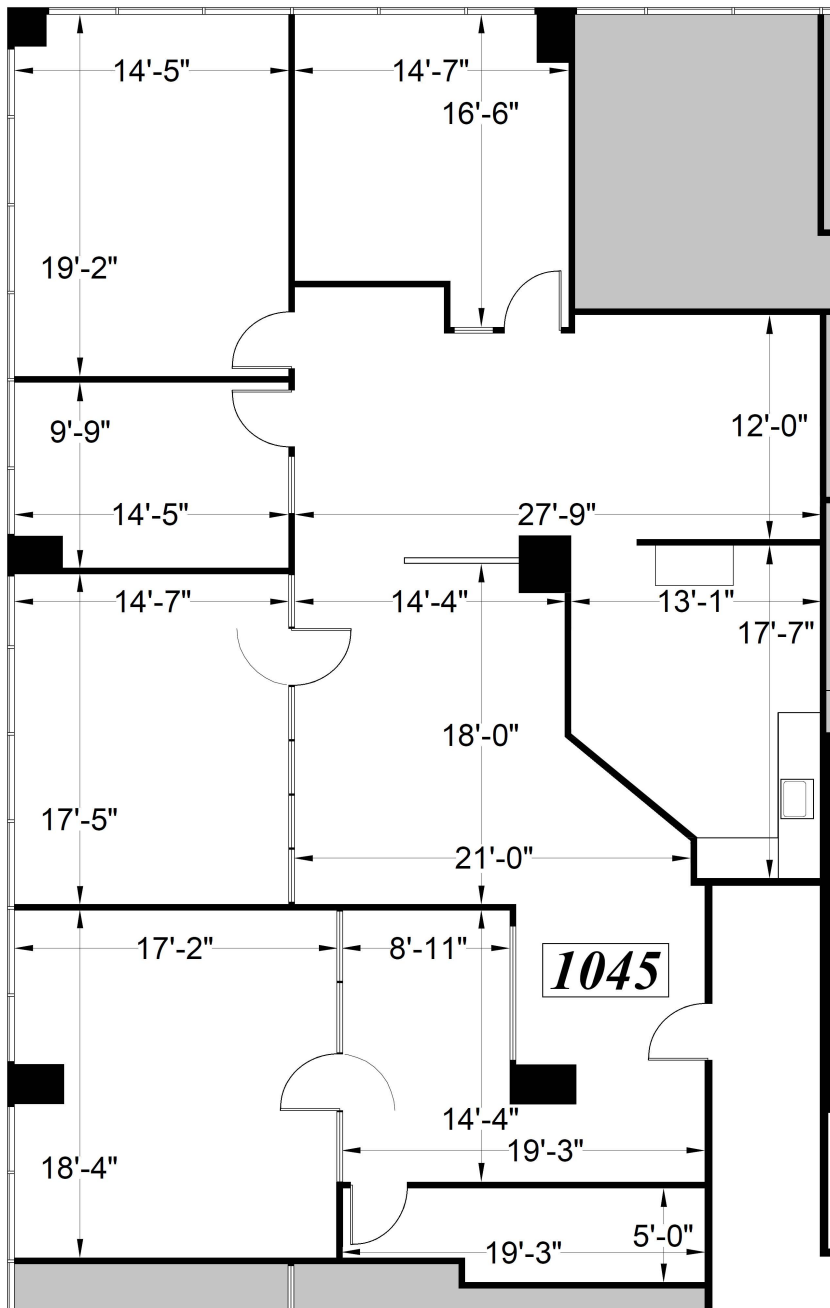


CLASS A OFFICE SPACE FOR LEASE | GOLDEN WEST TOWER BUILDING

1970 Broadway, Oakland, CA



Suite 1045: ±3,266 RSF

\$4.85 /RSF/Month, FSG

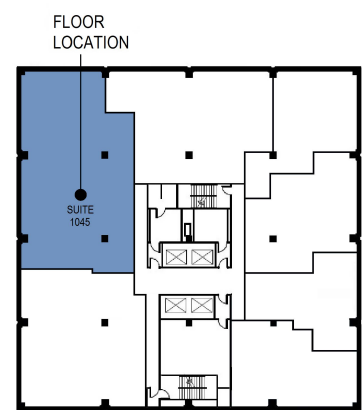
LEASING INFORMATION

Bob Maderious

Senior Vice President
925.357.2010

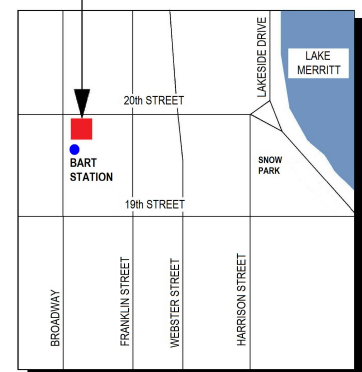
bob.maderious@transwestern.com
CA DRE LIC. 00616136

www.1970Broadway.com



10TH FLOOR KEY PLAN

THE TOWER BUILDING
1970 BROADWAY



SITE LOCATION MAP

Plans not to scale

T TRANSWESTERN®

2175 N. California Blvd., Suite 415
Walnut Creek, CA 94596
CA BROKER LIC. 01263636
T 925.357.2000
www.transwestern.com

The information provided herein was obtained from sources believed reliable; however, Transwestern makes no guarantees, warranties or representations as to the completeness or accuracy thereof. The presentation of this property is submitted subject to errors, omissions, change of price or conditions, prior sale or lease, or withdrawal without notice. Copyright © 2020 Transwestern.